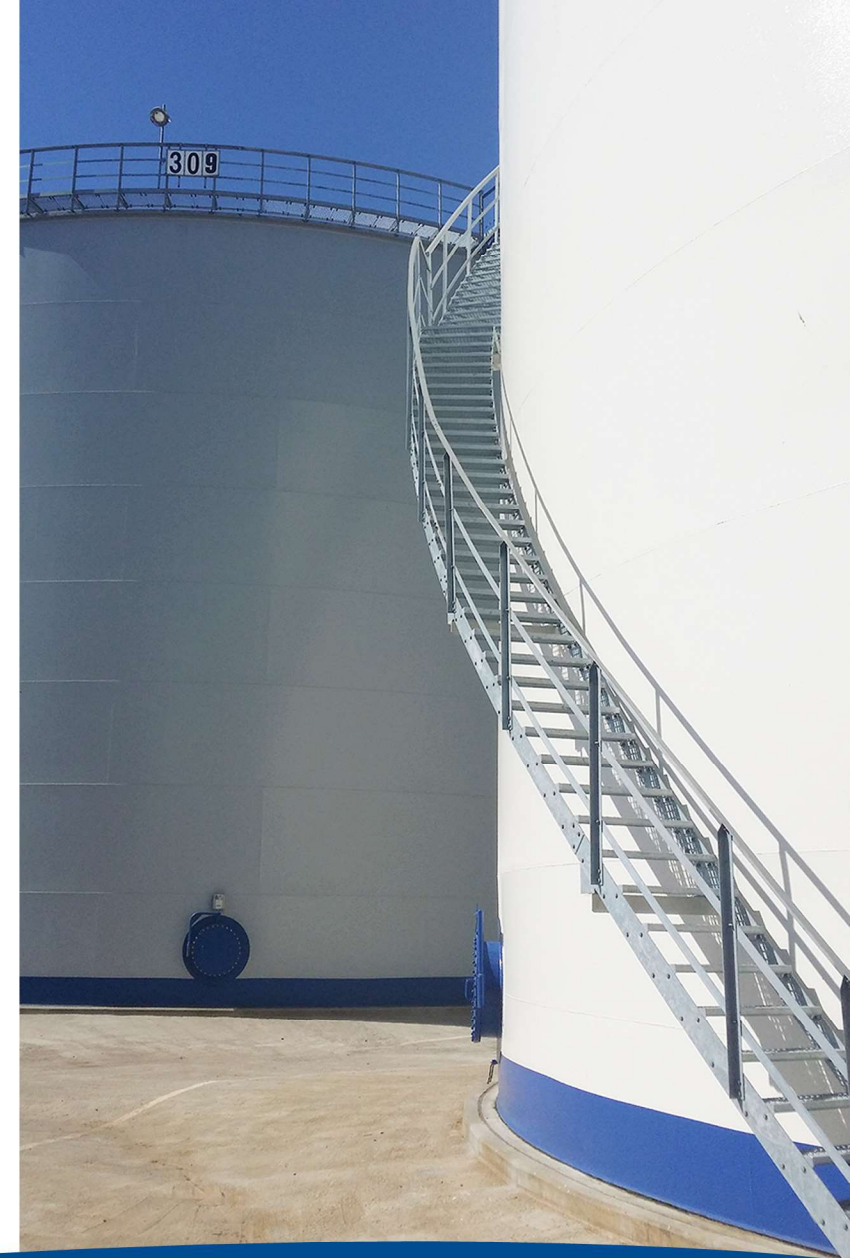




About Nordic Storage AB

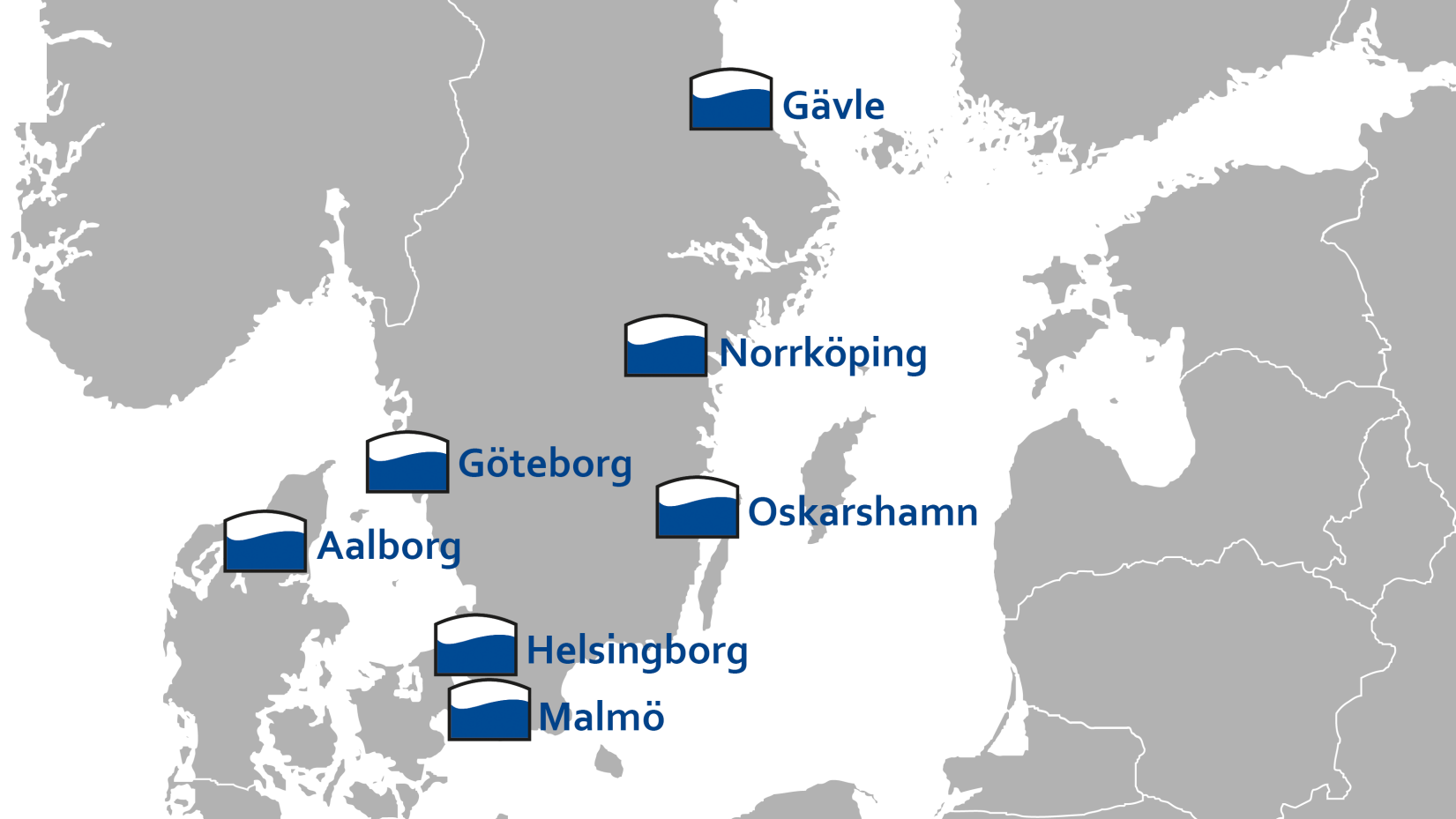
Nordic Storage AB, a PIR Group company, is active in the storage and handling of petroleum products, petrochemicals and biofuels. Nordic Storage controls over 1 million cubic meters of liquid bulk storage capacity, with terminals located in Sweden and Denmark.

Our clients range from international oil companies and traders to CSO companies and Scandinavian oil companies, industrial companies and energy producers.



NORDIC  **STORAGE**[®]

Phone HQ: +46 31 53 45 00
Phone Operations: +46 31 764 96 00
Email: info@nordicstorage.se
Website: www.nordicstorage.se



Terminal Overview

Port	Capacity	Ships draft (meters)	Products
Gothenburg	344 000 cbm	12.50	Middle distillates, Fuel Oil, Bio Oil, Chemicals
Helsingborg	90 000 cbm	10.50	Middle distillates
Malmö	81 000 cbm	12.50	Middle distillates, Fuel Oil, Bio Oil
Oskarshamn	110 000 cbm	10.00	Middle distillates
Norrköping	148 000 cbm	13.50	Middle distillates
Gävle	25 500 cbm	12.20	Middle distillates
Aalborg	240 000 cbm	9.40	Middle distillates, Fuel Oil



Gothenburg

57.6995° / 11.883°

Strategically located at the entrance of Göta Älv, - Scandinavia's leading Energy Port, Port of Gothenburg is an important hub for both crude oil and refined products.

Close proximity to three refineries and main petroleum companies, connected to the Port's common pipeline system, opens up good opportunities for local trading.

In Gothenburg we have a total storage capacity of 344 000 cbm divided amongst three terminals.

	Skarvik 1	Skarvik 2	Skarvik 3
Capacity	33 200 cbm	10 800 cbm	300 000 cbm
Tanks	3	10	
Caverns			3
Products	Middle distillates, Fuel Oil, Bio Fuel	Petroleum based special products, Middle distillates, Fuel Oil, Chemicals	Fuel Oil
Max ships draft	12.50 m	12.50 m	12.50 m
Max LOA	255 m	255 m	255 m
Max Beam	47 m	47 m	47 m

Skarvik 1 has a capacity of 33 200 cbm for Middle distillates, Fuel Oil or Bio Fuel.

Skarvik 2 has tanks up to 3 000 cbm, suitable for storage of petroleum based special products and chemicals.

Skarvik 3 has three caverns with a total capacity of 300 000 cbm for various types of Fuel Oil.



Helsingborg

56.0265° / 12.6975°

Helsingborg is situated on the doorstep of the Baltic Sea and serves an important hub for a range of different goods, including oil. Here alongside Öresund's narrowest passage we have 90 000 cbm of storage capacity for middle distillates. A favorable geographical location that is always ice free attracts intense ferry traffic to the Port of Helsingborg and this establishes the potential for smooth handling of all shipping during the year.

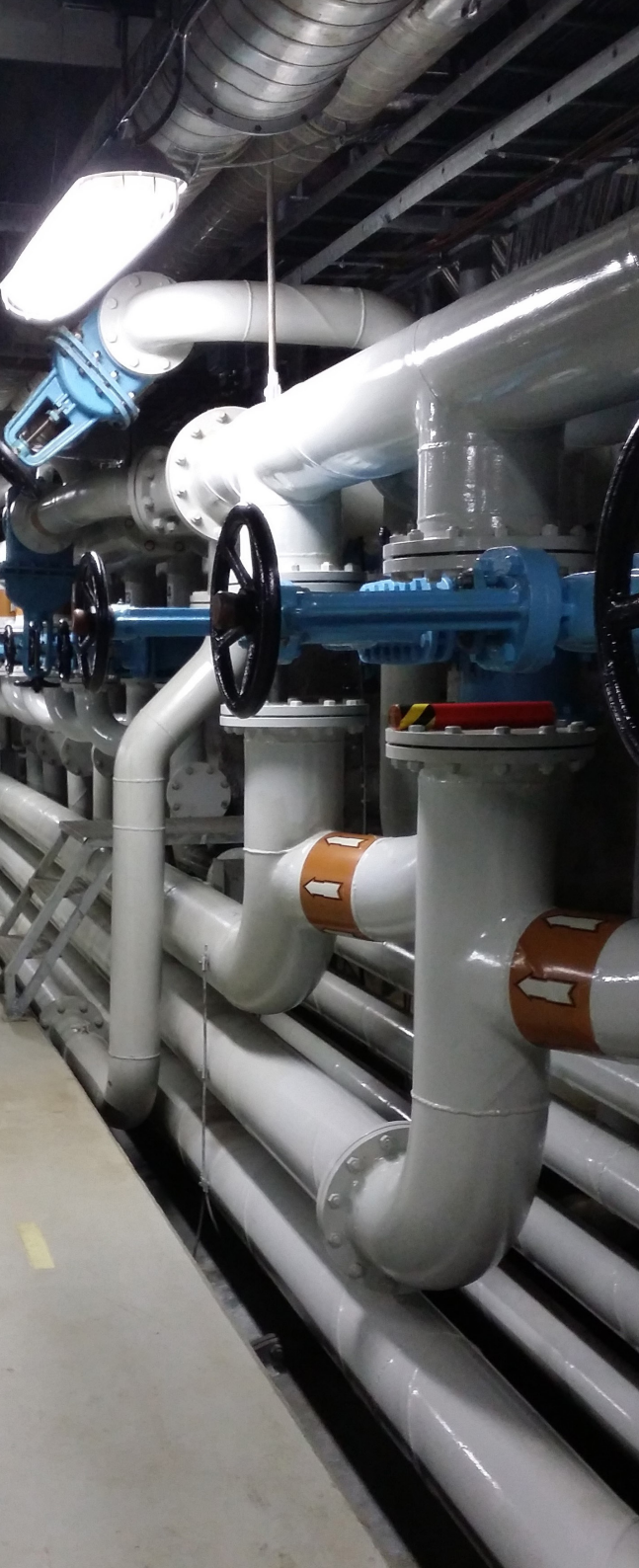
Capacity	90 000 cbm
Tanks	4
Products	Middle distillates
Max ships draft	10.50 m
Max LOA	215 m
Max Beam	No beam restriction

Malmö

55.624° / 13.014°

Copenhagen Malmö Port has the largest liquid bulk terminals in the Öresund region and import and export of liquid bulk products are oriented towards international and regional markets. The Öresund region is ideal for handling and storage of transit oil and the area is an important bunker station for the large number of vessels passing by.

Capacity	81 000 cbm
Tanks	15
Products	Middle distillates, Bio Fuel and Fuel Oil
Max ships draft	12.50 m
Max LOA	240 m
Max Beam	45 m



Oskarshamn

57.267° / 16.468°

In Oskarshamn on the Swedish east coast, located less than a day's sailing from the Baltic's major export ports, Nordic Storage has seven rock caverns and one tank with a total storage capacity of 110 000 cbm for middle distillates.

Capacity	110 000 cbm
Caverns	7
Tanks	1
Products	Middle distillates
Max ships draft	10.00 m
Max LOA	145 m
Max Beam	33 m

Norrköping

58.6175° / 16.2235°

Norrköping, with its geographical position, has a long tradition as a significant port city and is today one of Sweden's largest ports serving as an important location for both the domestic distribution and the accumulation of cargo for export.

Capacity	148 000 cbm
Caverns	2
Products	Middle distillates
Max ships draft	13.50 m
Max LOA	260 m
Max Beam	33 m



Gävle

60.6865° / 17.2°

The Gävle energy port is one of Sweden's largest with main petroleum companies represented. The proximity to Stockholm makes Gävle port the main supplier of Jet Fuel for Stockholm Arlanda airport. Despite its northerly location, Gävle port is ice-free all year round.

Capacity	25 500 cbm
Tanks	2
Products	Middle distillates
Max ships draft	12.20 m
Max LOA	245 m
Max Beam	42 m

Aalborg

57.0695° / 9.986°

The Port of Aalborg is strategically located on the Limfjord and is a hub for consolidating small shipments from the Baltic ports for onward movement to NW Europe.

In Aalborg we offer a total capacity of 240 000 cbm for storage of middle distillates, Bio Fuels and Fuel Oil.

Capacity	240 000 cbm
Tanks	8
Products	Middle distillates and Fuel Oil
Max ships draft	9.40 m
Max LOA	250 m
Max Beam	44 m